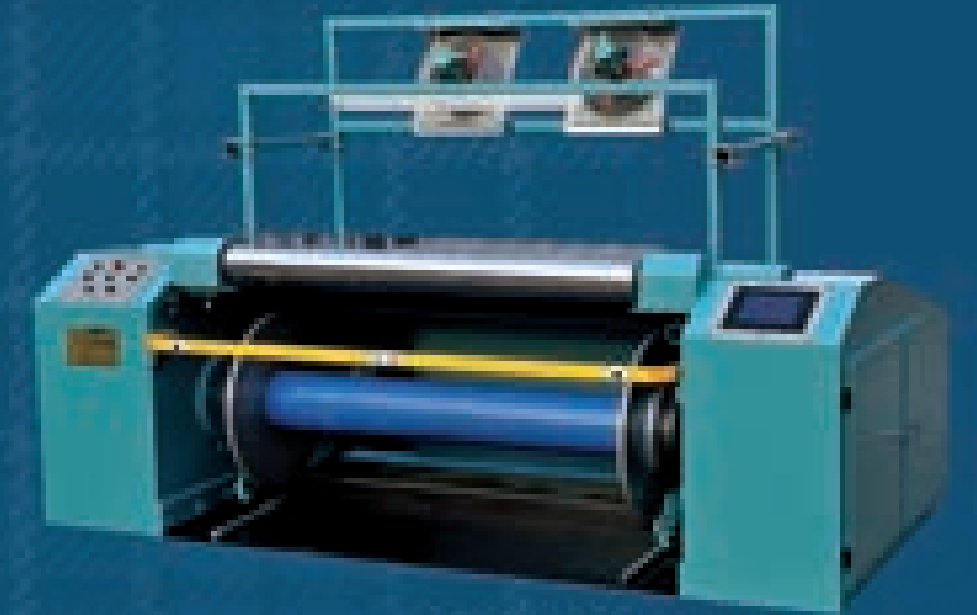


江阴市四纺机新科技制造有限公司
 Jiangyin No.4 Textile Machinery New-Tech Manufacturing Co., Ltd.

地址：江苏省江阴市长寿
 Add: Changshou, Jiangyin City, Jiangsu Province
 电话 (Tel): +86-510-86361210 86361460
 国际贸易 (International Trade Department): +86-510-86963830
 服务热线 (Service Line): +86-510-86362820
 传真 (Fax): +86-510-86361211 邮编 (P.C.): 214424
 邮箱 (E-mail): 4FJ@4FJ.COM
 网站 (Website): WWW.4FJ.COM
 www.chinawarpingmachine.com
 www.中国整经机.com



GA2518型球经整经机
 GA2518 Ball Warping Machine



GA261C型分纱整经机
 GA261C Frame Warping Machine

江阴市四纺机新科技制造有限公司

Jiangyin NO.4 Textile Machinery New-Tech Manufacturing Co.,Ltd.



GA251B 型球经整经机 GA251B Ball Warping Machine

适用范围

对经纱筒子纱进行集束，整经卷绕成球状，以供束状染色之用。

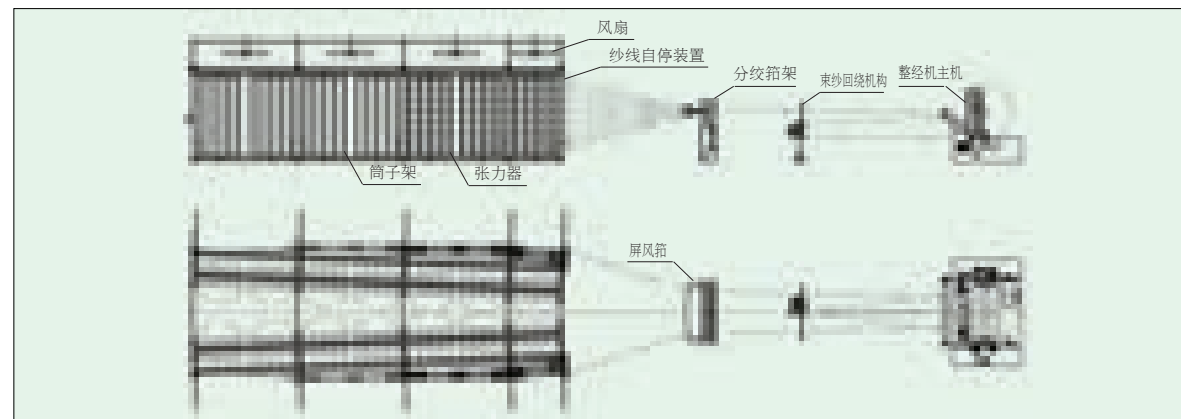
Scope of Application

Collect, warp and wind warp to make yarn into ball shape, for the use of rope-dyeing.



工艺流程示意图

Technical Flow Sheet



GA251B 型球经整经机 GA251B Ball Warping Machine

主要技术特征

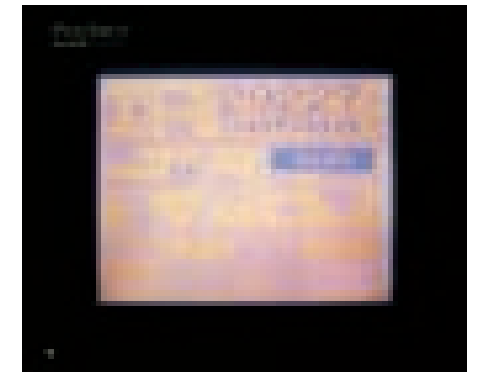
1. 应用交流变频调速技术，由计算机控制速度无级可调，确保卷绕速度恒定。
2. 电脑触摸屏人机界面，显示信息量大，清晰、直观、操作方便。
3. 独特的加压结构，采用精密比例阀构成闭环压力控制，可实现恒定的球经卷绕密度。
4. 采用计算机及 PLC 等先进技术，并设有定长绞线自停、满球自停、断头自停等功能以满足工艺需要。
5. 左右墙板采用优质钢板，双直线导轨，结构合理，刚性好，机器运转更平稳。
6. 操作球经满轴方式，使上下更加便捷、轻松。
7. 送径口往复采用原装进口自润滑工程塑料直线组件，避免了对直线轴承的维护保养。
8. 主动采用同步带传动，降低了设备运行时产生的噪声。
9. 主动辊采用液压钳式制动，回绕辊采用电磁刹车制动，停车平稳、可靠。
10. 能实现不停车穿绞绳的分绞箱控制方式，可减轻纱线的张力波动。
11. 分绞采用机械式上下摆动装置，运行平稳可靠，防止箱齿定点磨损。
12. 各种筒子架形式、锭距和锭数，供用户选配。
13. 张力器、断经自停装置形式多样，供用户选配。

Technical Features

1. Apply AC frequency-converting speed governing technology; be controlled by computer with stepless adjustable speed to make sure the constant winding speed.
2. Apply the human machine interaction with touch screen, by which a large amount of information can be showed. It is clear, intuitive, and easy to operate.
3. Apply the precise proportional valve to form a closed loop pressure control and the original pressure structure.
4. Apply the computer and PLC Technology, and be equipped with functions of fixed-length wire stop, full ball stop and broken-end stop to satisfy the process requirements.
5. The left and right wall plates are made of high quality steel plate with double linear guide, which is reasonably structured and good rigidity, so as to make the machine run more smoothly.
6. The upper and lower shaft can make the roller of upper and lower to doff full warp ball convenient and easy..
7. Reciprocating pacing of warp adopts imported self-lubricating plastic line assembly, which can eliminate a linear bearing maintenance.
8. Main transmission adopts synchronous belt transmission, which can reduce the noise when the equipment is running. Drive
9. Drive rool uses hydraulic brake-Jaw brake, Winding roll uses electromagnetic brake to make the stop smooth and reliable.
10. Pneumatic control mode of the lease reed can help string the twisted rope without stopping the machine, and lessen the tension variations of yarn.
11. The lease reed uses mechanical up-down oscillating device to make the operation smooth and reliable. and to avoid fixed-point wear of the reed.
12. Offer various forms of the bobbin creel, spindle pitch and kinds of bobbins for the users.
13. Offer varous forms of tensioner, warp stop motion for the users.



GA215B 型球经整经机
GA251B Ball Warping Machine



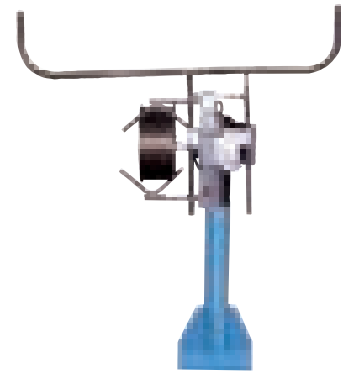
人机界面
Human Machine Interaction



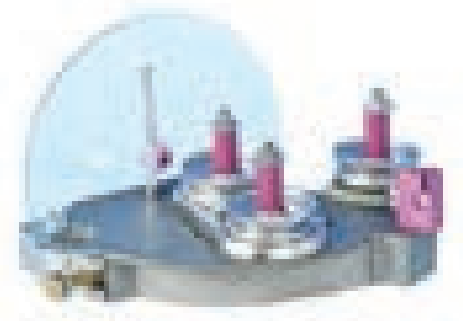
GA251B 型球经整经机 *GA251B Ball Warping Machine*

主要技术参数

1. 成型直径: $\leq 1400\text{mm}$
2. 成型宽度: 1000mm、1200mm
3. 整经速度: $\leq 400\text{m/min}$
4. 经纱长度误差: $\leq 0.2\%$
5. 加压压力: 1000N-6000N
6. 主电机功率: 7.5KW
7. 主机重量: 2500kg
8. 主机外形尺寸: 2410mm(长) \times 1860mm(宽) \times 1870mm(高)



束纱回绕机构
Rewind yarn-feeding mechanism



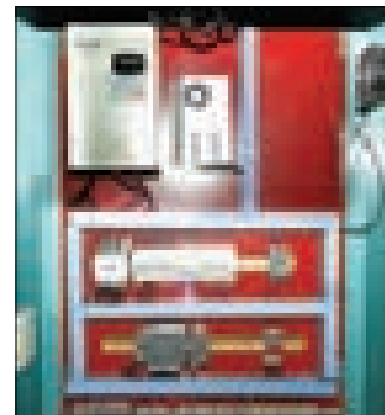
三柱式张力器
Extension device



分绞箱架
Lease reed frame

Main specifications

1. Forming diameter : $\leq 1400\text{mm}$
2. Forming width : 1000mm、1200mm
3. Warping speed: $\leq 400\text{m/min}$
4. Length error of warp: $\leq 0.2\%$
5. Pressure: 1000N-6000N
6. Main motor power: 7.5KW
7. Main body weight : 2500kg
8. Overall dimensions : 2410mm(length) \times 1860mm(width) \times 1870mm(height)



电气主控系统
Electrical control system



GA261C 型分纱整经机 *GA261C Detach Warping Machine*

适用范围

将已染好色的束状纱重新分开成单根的平行经纱片并均匀地卷绕成色纱经轴，以供应轴上浆及其他工艺之用。

Scope of Application

Divide again the colored bunched yarns into single-piece parallel warp slices and evenly wind up to colored warp beam for use by warp beam starching and other workmanships.

工艺流程示意图 Technical Flow Sheet





GA261C 型分纱整经机 GA261C Detach Warping Machine

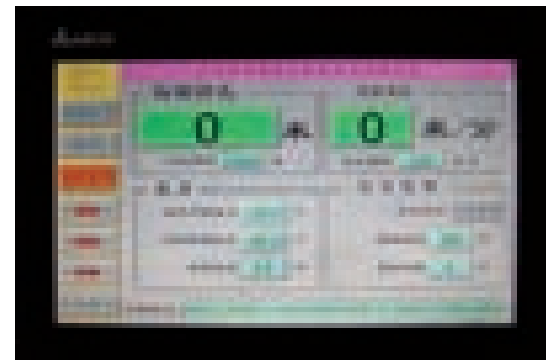
主要技术特征

1. 采用电机一级带轮传动经轴方式，变频调速，实现线速度无级设定，保持整经过程中线速度恒定。
2. 纱线卷绕张力可根据工艺要求调节和设定，采用张力架变频转动，经由回绕摆动架张力的信息反馈，对纱线进行实时张力补偿，可实现对经轴纱线卷绕密度控制，确保各经轴间卷绕密度的一致性。张力架的张力辊采用交叉形式，便于纱线顺利退绕。
3. 新型式储纱装置，可将卷绕经轴上的纱线退绕到纱桶内，减少倒车时断头几率，实现了对退绕部分纱线在重新整经时的张力控制，提高分纱经轴的质量。
4. 由各种传感器精密测量整经长度、速度。具有自动测长、测速、定长控制及分绞线定长自停等功能。
5. 采用经轴液压钳式制动，导纱辊、张力辊气式制动，制动平稳，简单可靠。
6. 采用气动上下轴、电动拍开拍合经轴，操作简单方便。
7. 往复拨纱装置及张力架上的振荡器，可使纱线在进行中顺利分开，确保分纱顺利行，提高整经速度，拨纱装置可根据整经速度自动升降，以防纱线缠绕。
8. 主机上装有安全栏杆保险装置、防飞花风扇架、照明灯架等实用装置。
9. 电脑触摸屏操作方便、直观、显示信息量大。
10. 储纱桶回绕工作台根据用户要求可选配。



Technical Features

1. Apply the mode of first grade motor belt transmitting warp beam and frequency control to realize stepless setting of line speed and maintain constant line speed during the warping process.
2. The winding tension of yarns can be regulated and set according to the process requirements. By applying frequency transmission of tension bracket and through information feedback of tension of backwind swaying bracket, the yarns can be compensated for tension in real time, which can realize the density control of warp beam yarns and guarantee the density consistency of winding among all warp beams. The tension roller of tension bracket uses crossing mode for successful backing-off of yarns.
3. The new type of yarn storage device can back wind the yarns from warp beam into the yarn tube to reduce the breakage when reverse machine, to realize tension control of back winding partial yarns when warping again, It improve the quality of yarn-diving warp beam.
4. Measure the warping length and speed by various kinds of sensors, having functions of automatic length an speed measuring, fixed length control, fixed length and automatic stopping of lease wires.
5. Apply warp beam hydraulic clamping mode of braking. Yarn guiding roller and tension roller air braking, characterized in stable braking and simple and reliable operation.
6. Apply air-opeated warp beam lifting and power-driven switching warp beam with simple and convenient operation.
7. Reciprocating yarn prodding device and vibrator on the tension bracket can successfully separate the yarn during the proceeding process to guarantee successful yarn dividing and increase warping speed to prevent yarn winding.
8. On the host machine, there is installed with applicable devices of safety rail protecting device, support for flying protecting fan and lighting lamp supports etc..
9. The computer contact screen is characterized in convenient and visual operation and big display information.
10. The back-winding work-platform for yarn storage tube can be configured according to the users' requirements.



人机界面
Human Machine Interaction



GA261C 型分纱整经机 GA261C Detach Warping Machine

主要技术参数

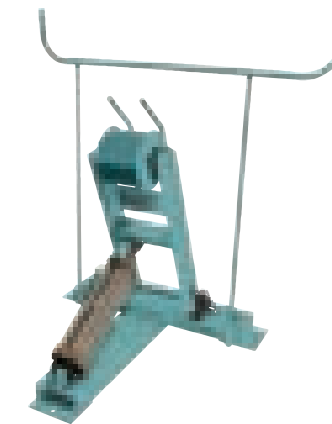
1. 整经幅宽：1600、1800（其他幅宽根据用户要求可定制）
2. 最大整经轴盘片直径 800mm、1000mm
3. 整经速度： $\leq 500\text{m/min}$
4. 整经电机功率：15KW
5. 拨纱电机功率：0.12KW
6. 吹风电机功率：0.18KW $\times 2$
7. 制动距离： $\leq 2\text{M}$ (300m/min)
8. 箱左右摆动范围：0-40mm
9. 最大张力：500N
10. 操作显示器：10.4 寸触摸屏
11. 外形尺寸：
1600mm 3600mm(长) \times 1850mm(宽) \times 2250mm(高)
1800mm 3800mm(长) \times 1850mm(宽) \times 2250mm(高)

Main specifications

1. Fabric width of warping beam : 1600、1800mm
(Other fabric width could be customize according to the requirement of customer)
2. Max. diameter of warp beam : 800mm、1000mm
3. Speed of beam warping: $\leq 500\text{m/min}$
4. Power of beam warping motor : 15KW
5. Power of yarn tailing motor: 0.12KW
6. Power of blasting motor: 0.18KW $\times 2$
7. Braking length : $\leq 2\text{M}$ (300m/min)
8. Left and right adjustable range of reed: 0-40mm
9. Max. tension: 500N
10. Operation displayer: 10.4 inch touch panel
11. Overall dimensions: 1600mm 3600mm(length) \times 1850mm(width) \times 2250mm(height)
1800mm 3800mm(length) \times 1850mm(width) \times 2250mm(height)



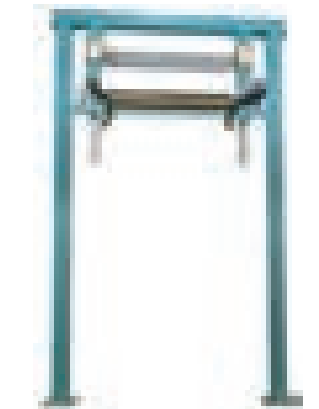
电气主控系统
Electrical control system



纱线回绕架
Back-winding Support of Yarns



张力辊交叉式张力架
Tension roller cross pattern
tension creel



新型式储纱架
New type yarn storage creel