

# HD-RG 高温低张力染色机

HD-RG high temperature low tension dyeing machine



▶ 主要技术参数: (Main technical parameters)

型号 Model	类别 Type	总功率 Total Power (kw)	外型尺寸 Dimensions (mm)		
			L	W	H
HD-RG-1T	300	17.2	3900	4900	4650
HD-RG-2T	600	23.8	5200	5200	4650
HD-RG-3T	900	33	6720	5500	4650
HD-RG-4T	1200	44	8300	5800	4650
HD-RG-6T	1800	65.6	11400	6100	4650

品质、服务、创新是华迪人永恒的追求  
Huadi always keep the high quality, good servie and innvoation.

盐城市华迪机械制造有限公司

地址: 江苏省射阳县经济开发区人民东路  
电话: 0515-82319933 传真: 0515-82309159  
电子信箱: ychd2319933@163.com  
公司网址: www.cnhdst.com

YANCHENG HUADI MACHINERY MANUFACTURING CO., LTD

Address: Renmin East Road, Economic Development Zone,  
Sheyang County, Jiangsu Province, China  
Tel: 0515-82319933 Fax: 0515-82309159  
E-mail: ychd2319933@163.com  
Website: http://www.cnhdst.com

由于产品不断改进设计, 所提供的产品与样本中所描述的有所不同, 本公司拥有对产品样本解释权

盐城市华迪机械制造有限公司  
YANCHENG HUADI MACHINERY MANUFACTURING CO., LTD



# HD-RG 高温低张力染色机

HD-RG high temperature low tension dyeing machine



品质 · 服务 · 创新 high quality, good service and innovation.

## 技术特征

- ◆ 提布轮置于缸体内部  
较小的织物提升高度  
织物运行张力低  
处理后织物缩水率低  
提布轮能耗低  
处染后的织物无起毛、乱毛现象，布面品质好。
- ◆ 可调节变载染布槽设计，底部铺设铁氟龙管，充分的布液分离设计。  
织物在液面上运行  
超低浴比，浴比低至1:4.5  
增加了织物的载布量 单管容量达250~300KG  
染缸具有更好的机动性，处染织物范围广。  
较少出现织物缠绕、乱布现象。
- ◆ 100%的预备缸设计（可选）  
避免了车间缺水时的等待时间  
预备缸加热快速进入主缸，减少了准备时间。  
与加料桶相通可以稀释化学助剂  
缩短整个工艺时间
- ◆ 自清洁过滤器  
保持喷嘴压力稳定  
在每次排水时过滤器被自动清洁，节省清洁时间。  
工艺再现性能高  
降低主泵的能耗
- ◆ 特别设计的喷嘴及折布系统  
织物克重范围广  
锥形渐开式喷嘴，织物得以扩展。  
缓和的波形输布管，渐开式的通道，织物扩展更充分，上色更均匀。  
折布时喷嘴和波形输布管整体转动，避免了传统染机因后摆布造成侧面对织物的挤压，织物打开充分，实现最佳折布。

## Technology characteristics

- ◆ Lifter reel device is within the vessel  
Lesser lifting height to avoid elongation of fabric  
Lower tension on fabric during processing  
Lesser shrinkage  
Lesser power consumption on lifting reel  
Better finishing quality on pile
- ◆ Adjustable dyeing tank design, with teflon plates underneath. Towel and dye fluids are separated.  
Fabric travel above the dye fluid  
Low bath ratio 1:4.5  
Extra capacity, 250~300KGS/tube  
Flexible in dyeing different type of fabrics  
Lesser entanglement
- ◆ 100% Stock Tank (optional)  
Prevent water shortage  
Avoid long waiting time, pre-heated water maybe pump into main vessels quickly  
Linked with dosing tank  
Shorten cycle and processing time
- ◆ Auto lint cleaning and filter  
Ensure stable nozzle pressure  
During each drainage, filter is automatically cleaned, shorten cleaning time  
Dyeing process maybe repeated with high accuracy  
Lower power requirement from the main pump, save energy
- ◆ Special nozzle and fabrics folding system  
Handles wide range of GSM of fabrics  
Cone shaped nozzle with wide opening, which allows fabrics to open up and get an even dyeing effect  
Wave shape tubes with wide opening, which allows fabrics to open up and get an even dyeing effect  
During exit from nozzle and wave shape tube, the whole structure swings left and right. This avoid squeezing to the two edges of the towel as in the traditional machines



## 应用领域:

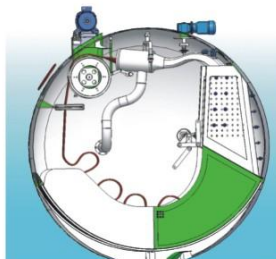
该机专为纯棉或涤纶混纺毛巾及克重大的布种而设计，特大喷嘴直径达250mm,特大特宽布槽设计使布能有更多空间松弛染色，高效能不锈钢离心泵加上先进染液循环系统，能确保良好染色效果，自清洁过滤装置，节省人工，能有效地把碎毛和杂质隔离，大大提高工作效率。低浴比1:4.5染色可减少耗水和节能。先进程序控制器能提高染色效率及染色重现性。

### Application field:

This machine is specially designed for pure cotton towel, polyester blended towel or the fabric which with heavy gsm. Extra-large nozzle diameter 250 mm, the extra large and wide cloth groove design allows the cloth to have more space for relaxation and dyeing. High-performance stainless-steel centrifugal pump, combined with advanced dyeing liquid circulation system, can ensure good dyeing effect. The self-cleaning filter could segregate the lint and impurities efficiency. Low bath ratio (1:4.5) will reduce water consumption and saving energy. Advanced program controller can improve the efficiency of dyeing and dyeing reproducibility.



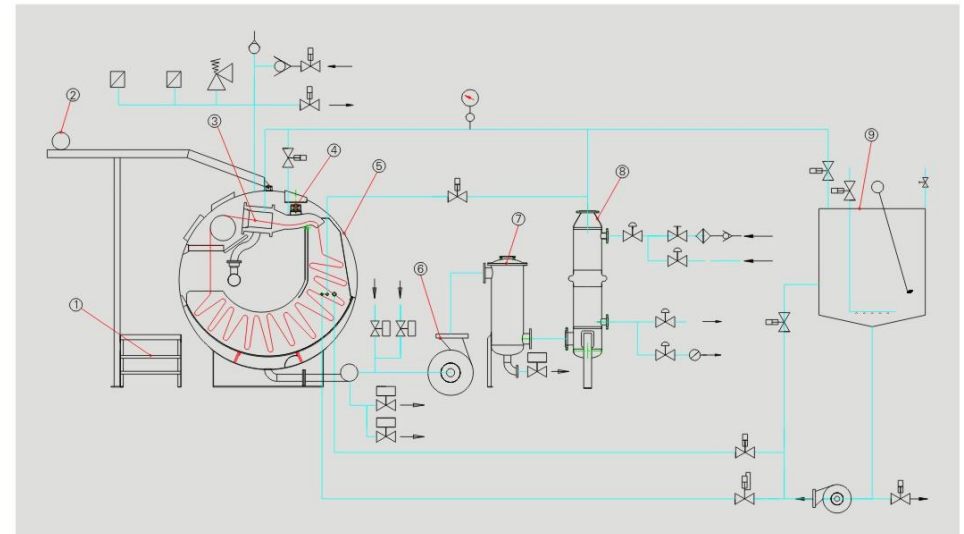
先进的控制系统  
Advanced program controller



内部结构示意图  
Internal structure



自清洁过滤器  
Auto lint cleaning and filter



1.工作台；2.出布系统；3.喷嘴；4.摆布系统；5.染布槽；6.主泵；7.自清洁过滤器；8.换热器；9.加料桶。  
1.Work platform ; 2.Delivery system ; 3.Nozzle ; 4.Folding system ; 5.Dyeing tank ; 6.Main pump ; 7.Auto lint cleaning and filter ; 8.Heat exchanger ; 9.Dosing tank.